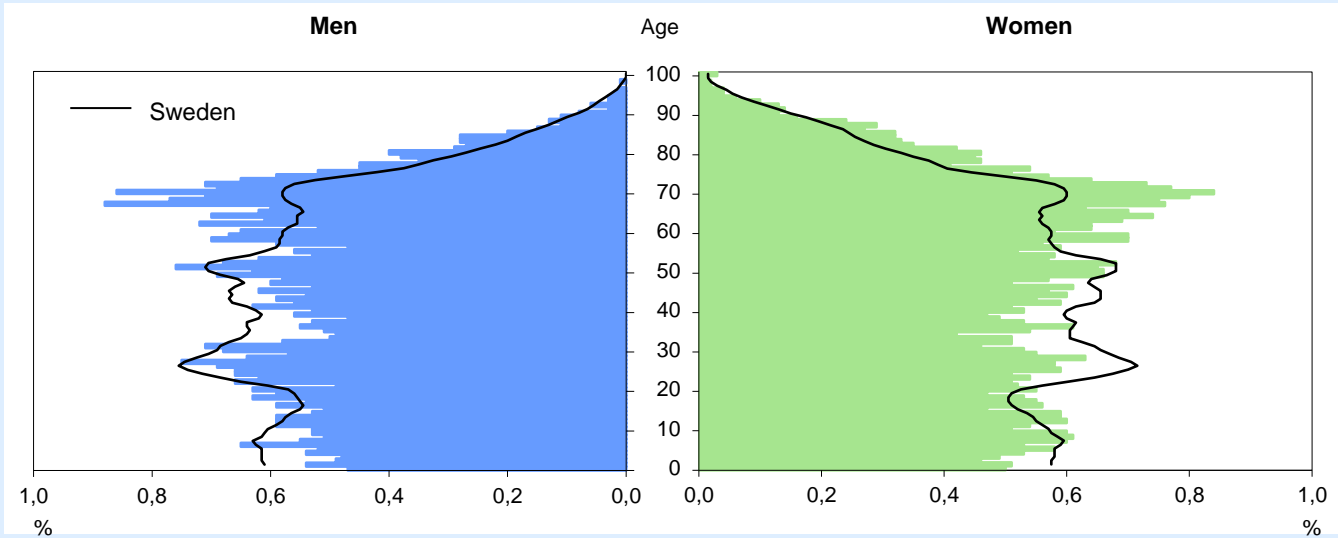


# Härnösand Municipal facts

Land area: 1 058 sq km

Inhabitants/sq km: 24

## Population by age, 2016



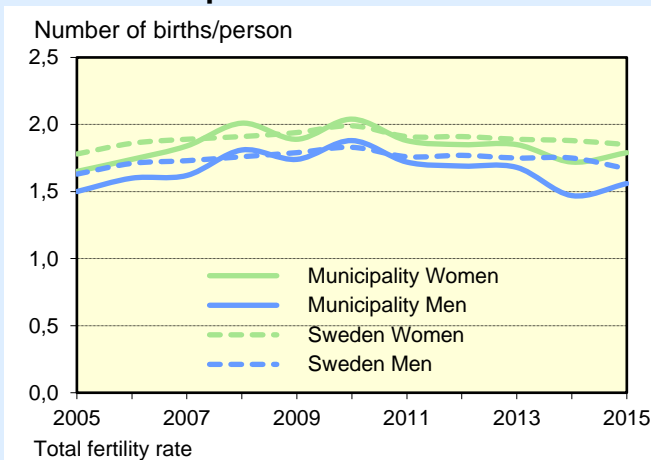
## Population by age, 2016

Age	Percentage distribution Municipality			Sweden		
	M	W	Tot	M	W	Tot
0–6	7	7	7	9	8	8
7–15	10	10	10	11	10	10
16–19	5	4	4	4	4	4
20–24	6	5	6	7	6	6
25–44	23	22	23	27	26	26
45–64	25	25	25	25	25	25
65–79	18	19	19	14	15	15
80–	5	8	6	4	6	5
Total, %	100	100	100	100	100	100
Total (thou)	13	13	25	5 013	4 982	9 995

## Population trends, 2006–2016

Year (31 Dec.)	Population Number	Excess of births over deaths	Net migration	
			M	W
2006	25 080	-103	7	-52
2007	24 922	-66	-47	-43
2008	24 716	-77	-73	-60
2009	24 675	-100	-4	67
2010	24 611	-32	17	-50
2011	24 541	-53	-19	-13
2012	24 398	-74	-51	-20
2013	24 509	-84	142	52
2014	24 755	-83	218	107
2015	25 066	-80	237	149
2016	25 269	-92	157	145

## Live births per woman/man



## Migrations, 2016

	Men	Women
<b>In-migration</b>	891	790
within the county	187	181
from another county	326	332
from another country	378	277
Of which, ages 18–24	202	174
<b>Out-migration</b>	734	645
within the county	174	158
to another county	534	453
to another country	26	34
Of which, ages 18–24	174	167
<b>Net migration</b>	157	145

## Births and deaths, 2016

Number	Men	Women
Births	112	122
Deaths	157	169

## Foreign born, 2016

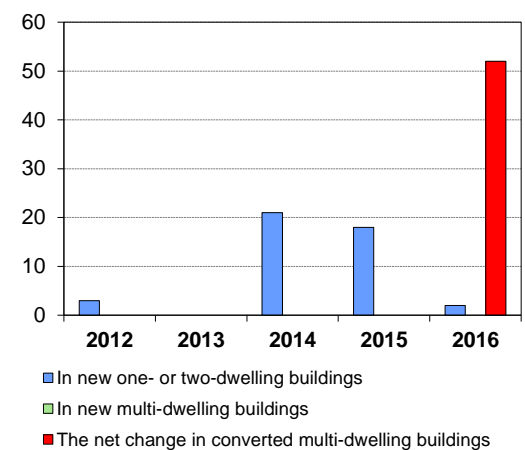
Prop. (%) of all inhabitants	M	W	Tot
Municipality	15	13	14
Sweden	18	18	18

## Seats in the Municipal Council

Political party	Number of seats after the election			
	2010		2014	
	Men	Women	Men	Women
Moderate Party	5	3	4	3
Centre Party	2	2	2	1
Liberal Party	1	1	1	1
Christian Democratic Party	1	0	1	0
Green Party	1	2	1	4
Social Democratic Party	9	9	10	9
Left Party	2	1	2	1
Sweden Democrats	1	0	3	0
Other parties	1	2	0	0
All parties	23	20	24	19

## Completed/converted dwellings

Number of dwellings



## Population by level of education, 31 December 2016

Level of education	Percentage distribution								
	Municipality			County			Sweden		
	M	W	Tot	M	W	Tot	M	W	Tot
Compulsory schooling	14	12	13	14	10	12	14	10	12
Upper secondary	55	46	51	57	49	53	49	42	46
Post-secondary education	29	40	35	27	40	33	35	46	40
Unknown	2	2	2	2	1	1	3	2	2
Total, %	100	100	100	100	100	100	100	100	100
Total (1 000)	7	7	13	69	65	134	2 919	2 809	5 728

Refers to age group 20–64

## Employed by age group, 2015

	Prop. (%) of all within ages		
	Men	Women	Total
<b>Municipality</b>			
20–24	57	58	58
25–44	74	74	74
45–64	80	79	79
20–64	75	74	75
<b>County</b>			
20–24	64	64	64
25–44	82	80	81
45–64	83	80	82
20–64	80	79	79
<b>Sweden</b>			
20–24	61	61	61
25–44	81	78	80
45–64	81	79	80
20–64	79	77	78

Refers to the night population

### Night population:

residing in the municipality, regardless of workplace

### Day population (jobs):

working in the municipality, regardless of residence

## Employment by sector, 2015

	Night population		Day population	
	Men	Women	Men	Women
<b>Municipality</b>	5 672	5 261	5 228	5 398
Business sector	4 218	2 371	3 673	2 417
Public sector	1 454	2 890	1 555	2 981
<b>County (1 000)</b>	60	55	60	54
Business sector	51	26	50	26
Public sector	10	29	10	29
<b>Sweden (1 000)</b>	2 460	2 273	2 455	2 271
Business sector	2 106	1 296	2 102	1 294
Public sector	354	977	353	976

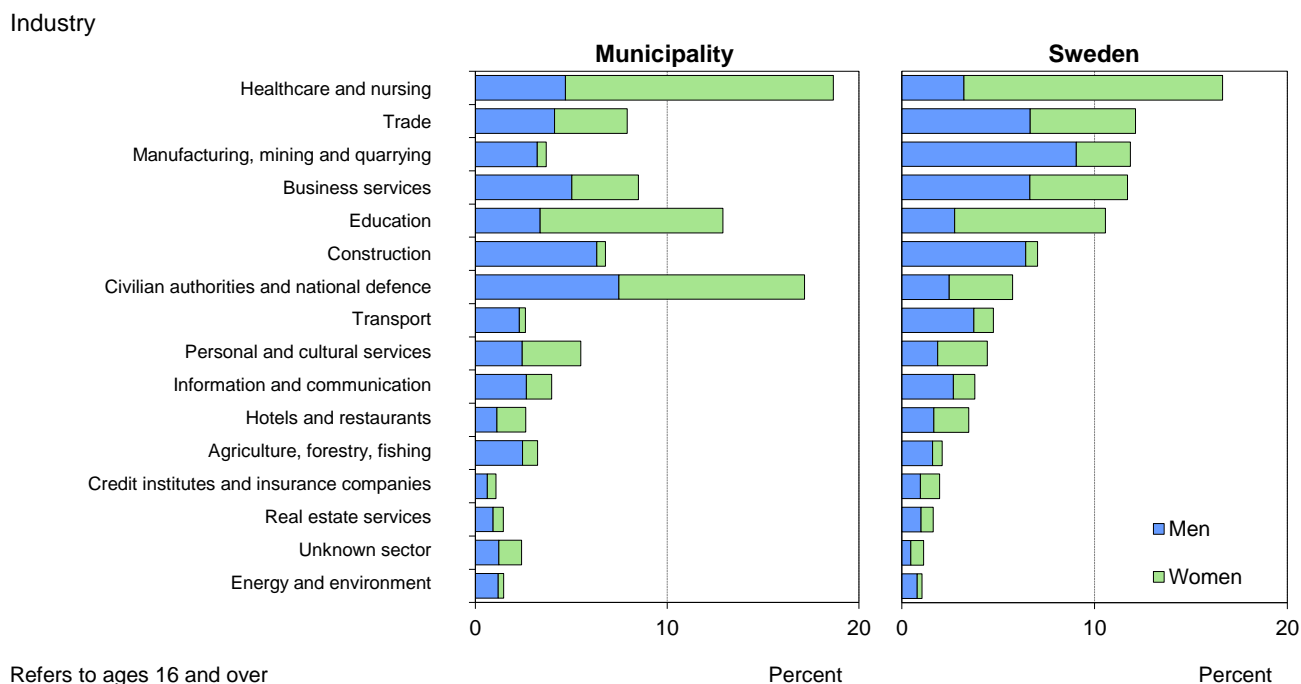
Number of persons ages 16 and over

## Commuting, 2015

	Men	Women
<b>Commuting in</b>	974	1 002
within the county	780	837
from another county	194	165
<b>Commuting out</b>	1 418	865
within the county	1 075	692
to another county	343	173
<b>Net commuting</b>	-444	137

Number of persons ages 16 and over

## Employment by industry, 2015



## Self-employed, 2015

Number of employed	Men		Women	
	Self-empl. in lim.comp.	Self-employed	Self-empl. in lim.comp.	Self-employed
1	65	424	18	236
2-4	108	83	31	25
5-9	53	4	14	1
10-	29	1	14	0
Total	255	512	77	262

Number of persons ages 16 and over

Refers to the day population

## Sickness/activity compensation, 2016

	Prop. (%) of all within ages		
	Men	Women	Total
<b>Municipality</b>			
55-59	10	16	13
60-64	12	22	17
20-64	6	9	8
<b>Sweden</b>			
55-59	9	14	12
60-64	13	20	16
20-64	5	7	6

Replace benefits for disability pension and sickness

## Job seekers

	Proportion (%) of all within age group								
	Municipality			County			Sweden		
	M	W	Tot	M	W	Tot	M	W	Tot
<b>March, 2016</b>									
Ages 20-64	13	8	11	9	7	8	7	6	6
Unemployed	6	4	5	5	3	4	4	3	3
Labour market progr.	6	4	5	5	3	4	3	3	3
Of which, ages 20-24	21	12	17	17	10	14	10	7	8
Number, ages 20-64	867	543	1 410	6 433	4 309	10 742	198 136	155 806	353 942
<b>March, 2017</b>									
Ages 20-64	12	9	11	9	7	8	7	6	6
Unemployed	6	4	5	5	3	4	3	3	3
Labour market progr.	6	4	5	4	3	4	3	3	3
Of which, ages 20-24	17	11	14	15	9	12	9	6	8
Number, ages 20-64	838	572	1 410	6 134	4 237	10 371	197 756	158 184	355 940

The presentation refers to those who are registered at the Swedish Public Employment Service

## Employment and employed, 2015 – Total

Industry	Day population				Night population			
	Municipality	County	Sweden	Municipality	County	Sweden		
	Number	%	%	%	Number	%	%	%
Agriculture, forestry, fishing	345	3	4	2	341	3	4	2
Manufacturing, mining and quarrying	393	4	12	12	555	5	12	12
Energy and environment	156	1	1	1	188	2	1	1
Construction	721	7	7	7	782	7	7	7
Trade	841	8	10	12	974	9	10	12
Transport	277	3	5	5	412	4	5	5
Hotels and restaurants	279	3	3	3	309	3	3	3
Information and communication	423	4	3	4	433	4	3	4
Credit institutes and insurance companies	114	1	3	2	170	2	3	2
Real estate services	154	1	2	2	177	2	1	2
Business services	904	9	9	12	973	9	9	12
Civilian authorities and national defence	1 824	17	7	6	1 508	14	7	6
Education	1 371	13	10	11	1 363	12	10	11
Healthcare and nursing	1 984	19	18	17	1 918	18	18	17
Personal and cultural services	584	5	4	4	582	5	4	4
Unknown sector	256	2	1	1	248	2	1	1
<b>Total</b>	10 626	100	100	100	10 933	100	100	100
Refers to ages 16 and over								

## Employment and employed, 2015 – Men

Industry	Day population				Night population			
	Municipality	County	Sweden	Municipality	County	Sweden		
	Number	%	%	%	Number	%	%	%
Agriculture, forestry, fishing	262	5	5	3	256	5	5	3
Manufacturing, mining and quarrying	343	7	19	17	492	9	19	17
Energy and environment	126	2	2	2	159	3	2	2
Construction	672	13	13	12	734	13	13	12
Trade	439	8	11	13	543	10	11	13
Transport	243	5	8	7	356	6	8	7
Hotels and restaurants	120	2	2	3	140	2	2	3
Information and communication	283	5	5	5	306	5	5	5
Credit institutes and insurance companies	66	1	2	2	97	2	2	2
Real estate services	98	2	2	2	119	2	2	2
Business services	534	10	9	13	573	10	9	13
Civilian authorities and national defence	795	15	6	5	665	12	5	5
Education	358	7	5	5	368	6	5	5
Healthcare and nursing	499	10	7	6	473	8	7	6
Personal and cultural services	260	5	4	4	265	5	4	4
Unknown sector	130	2	1	1	126	2	1	1
<b>Total</b>	5 228	100	100	100	5 672	100	100	100
Refers to ages 16 and over								

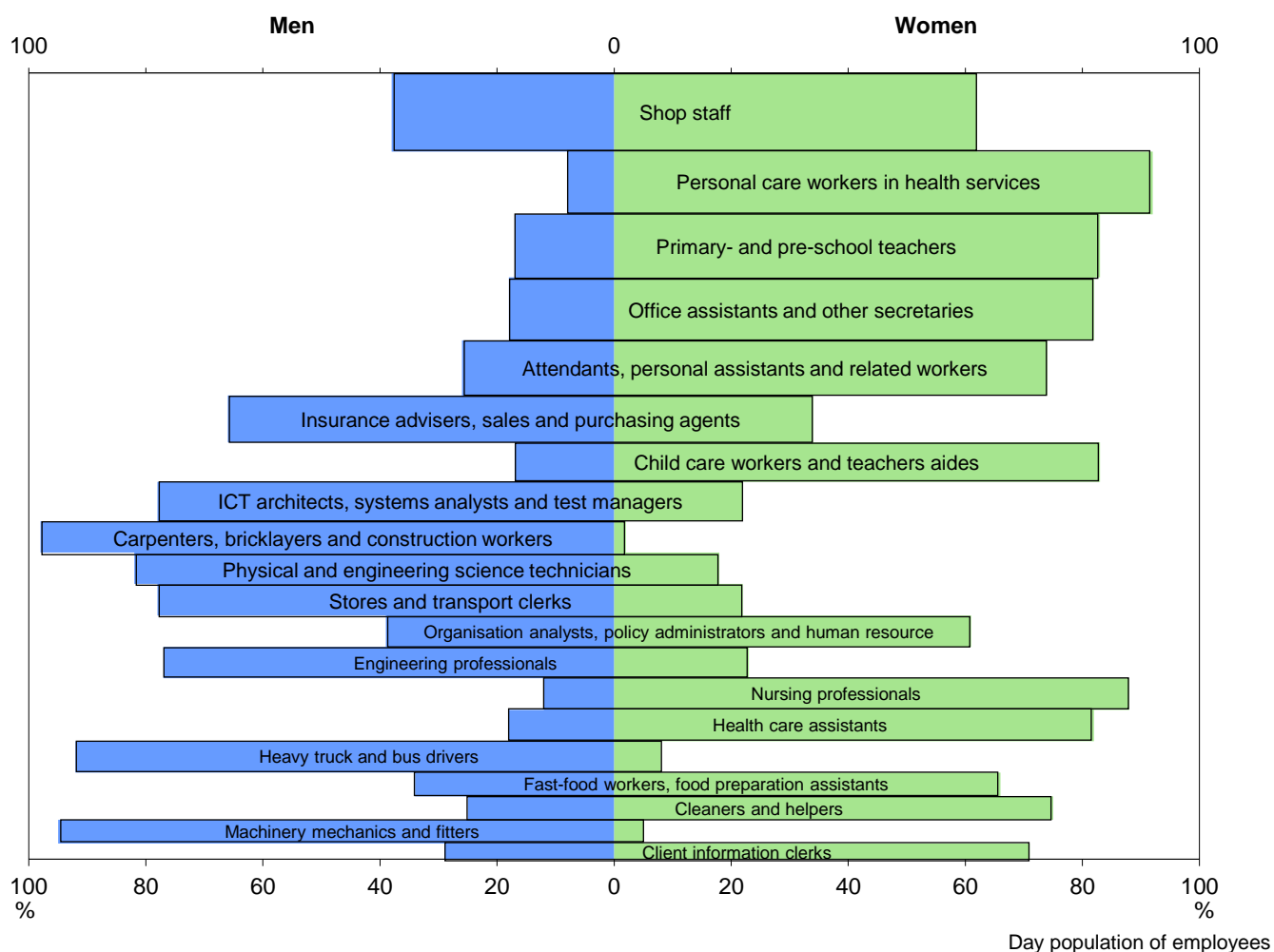
## Employment and employed, 2015 – Women

Industry	Day population				Night population			
	Municipality	County	Sweden	Municipality	County	Sweden		
	Number	%	%	%	Number	%	%	%
Agriculture, forestry, fishing	83	2	2	1	85	2	2	1
Manufacturing, mining and quarrying	50	1	5	6	63	1	5	6
Energy and environment	30	1	1	1	29	1	1	1
Construction	49	1	1	1	48	1	1	1
Trade	402	7	9	11	431	8	9	11
Transport	34	1	2	2	56	1	2	2
Hotels and restaurants	159	3	3	4	169	3	3	4
Information and communication	140	3	2	2	127	2	2	2
Credit institutes and insurance companies	48	1	3	2	73	1	3	2
Real estate services	56	1	1	1	58	1	1	1
Business services	370	7	8	11	400	8	8	11
Civilian authorities and national defence	1 029	19	9	7	843	16	9	7
Education	1 013	19	16	16	995	19	16	16
Healthcare and nursing	1 485	28	31	28	1 445	27	31	28
Personal and cultural services	324	6	5	5	317	6	5	5
Unknown sector	126	2	2	1	122	2	2	1
<b>Total</b>	5 398	100	100	100	5 261	100	100	100
Refers to ages 16 and over								

## The 20 most common occupations in the municipality, 2015

Day population of employees	Number		Perc.distr.			Sex distr. (%)	
	Men	Women	M	W	Tot	M	W
Attendants, personal assistants and related workers	168	408	4	8	6	29	71
Health care assistants	112	408	2	8	6	22	78
Primary- and pre-school teachers	90	411	2	8	5	18	82
Organisation analysts, policy administrators and hur	173	323	4	7	5	35	65
Shop staff	183	292	4	6	5	39	61
Office assistants and other secretaries	97	319	2	6	4	23	77
Client information clerks	187	183	4	4	4	51	49
Other surveillance and security workers	211	103	5	2	3	67	33
Carpenters, bricklayers and construction workers	263	14	6	0	3	95	5
Personal care workers in health services	46	218	1	4	3	17	83
Child care workers and teachers aides	48	188	1	4	3	20	80
Insurance advisers, sales and purchasing agents	114	57	3	1	2	67	33
Physical and engineering science technicians	133	21	3	0	2	86	14
Cleaners and helpers	38	103	1	2	1	27	73
Fast-food workers, food preparation assistants	43	96	1	2	1	31	69
Newspaper distributors, janitors and other service w	85	47	2	1	1	64	36
Building caretakers and related workers	106	24	2	0	1	82	18
Financial and accounting associate professionals	55	74	1	1	1	43	57
Heavy truck and bus drivers	120	7	3	0	1	94	6
Teaching professionals not elsewhere classified	30	96	1	2	1	24	76
Total 20 occupations	2 302	3 392	51	69	60	40	60
All occupations	4 487	4 946	100	100	100	48	52

## The 20 most common occupations in the country, 2015



## Preschool activities and care of school-age children 2016

Enrollment	Municipality		Sweden
	Number	%	%
Pre-school, 1–5	1 072	84	84
Leisure time centre, 6–12	1 005	51	58
Pedagogical child care, 1–5	28	2	2
6–12	..	..	0

Proportion (%) of all within age group. Information with fewer than 5 persons per group is not presented.

## Number of households 2016

Type of household	Number of households			Total children
	Without children aged 0-24	Children aged 0-24	Children aged 25+	
Single	5 196	702	109	6 007
Cohabiting/ married	3 303	2 202	165	5 670
Other household	368	206	11	585
<b>Total</b>	<b>8 867</b>	<b>3 110</b>	<b>285</b>	<b>12 262</b>

No information about type of household is available for 0,11 percent of the population in the municipality.

## Total income, 2015

	SEK thousand		
	Men	Women	Total
<b>Average income</b>			
Municipality	286	253	270
County	324	265	295
Sweden	339	268	304
<b>Median income</b>			
Municipality	296	264	280
County	327	274	298
Sweden	328	268	296

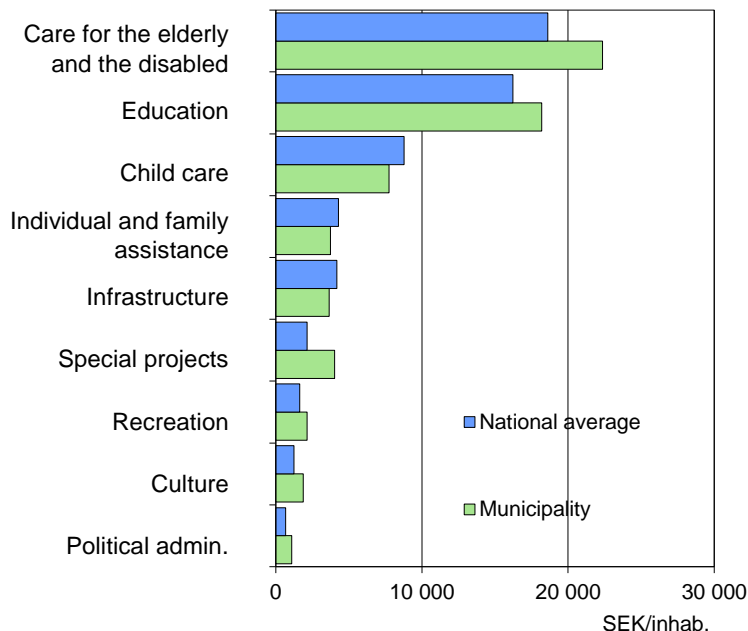
Income from employ. and business, age gr. 20–64

## Social assistance, 2015

Type of household	Recipient households		Sweden
	Municipality	%	
	Number	%	%
<b>Cohabiting</b>			
without children	28	3	5
with children	107	12	12
<b>Single men</b>			
without children	435	50	41
with children	14	2	3
<b>Single women</b>			
without children	198	23	23
with children	85	10	15
<b>Total</b>	<b>867</b>	<b>100</b>	<b>100</b>

Some municipalities have not submitted information or have not submitted complete information for 2015. See Definitions.

## Expenditures SEK, per inhabitant, 2015



## Local taxes, 2017

<b>Municipality</b>	
Total local tax rate	34,63
of wich to municipality	23,34
Tax base, SEK/inhab.	178 772
Tax base, index	89
<b>County average</b>	
Total local tax rate	34,04
of wich to municipality	22,75
Tax base, SEK/inhab.	193 086
Tax base, index	96
<b>National average</b>	
Total local tax rate	32,12
of wich to municipality	20,75
Tax base, SEK/inhab.	201 878
Tax base, index	100

Index, Sweden = 100